

Bracelet Close

Corringham, Essex

Client

Thurrock Council

Project Cost

£2.3 million

Status

Complete

Awards

Civic Trust Award 2018 / Commendation / Winner

RIBA East Region Award 2018 / Shortlisted

RICS Award 2017 / Winner RIBA East Region Award 2017 / Shortlisted

Architects Journal Architecture Award 2017 / Shortlisted

Blueprint Award 2017 / Shortlisted

Housing Design Awards 2017 / Shortlisted

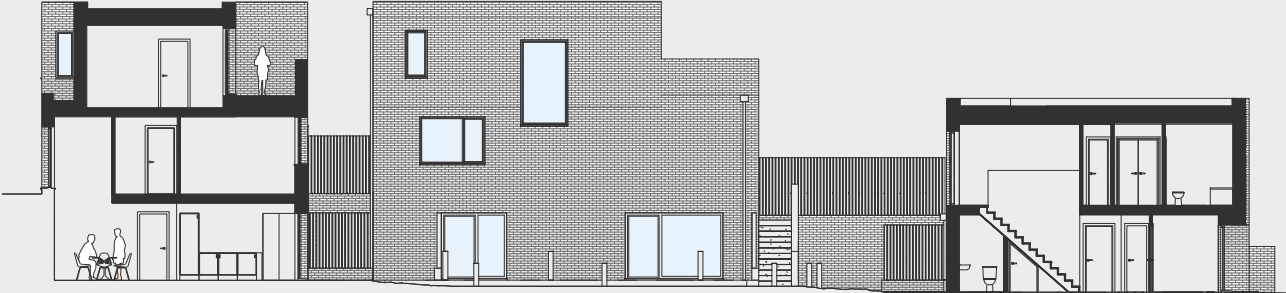
Sunday Times British Homes Awards 2016 / Shortlisted

Housing Design Awards 2014 / Shortlisted

The development comprises twelve new homes arranged around a central communal courtyard garden.

The houses have been designed to make the most of the sloping site and views to the countryside beyond and to offer outstanding levels of amenity and light. Three-storey terraced houses on the higher part of the site benefit from double height space which brings light into the living space from the south and roof terraces that offer views towards the north. Smaller two storey terraced houses front on to the adjacent street and have terraces that face southwards into the communal garden

Bracelet Close / Bell Phillips Architects



Bracelet Close / Bell Phillips Architects



